

**ANI
MECH®**

Swedish Pioneers in 3D & Interactive Visualization



WHAT WE DO

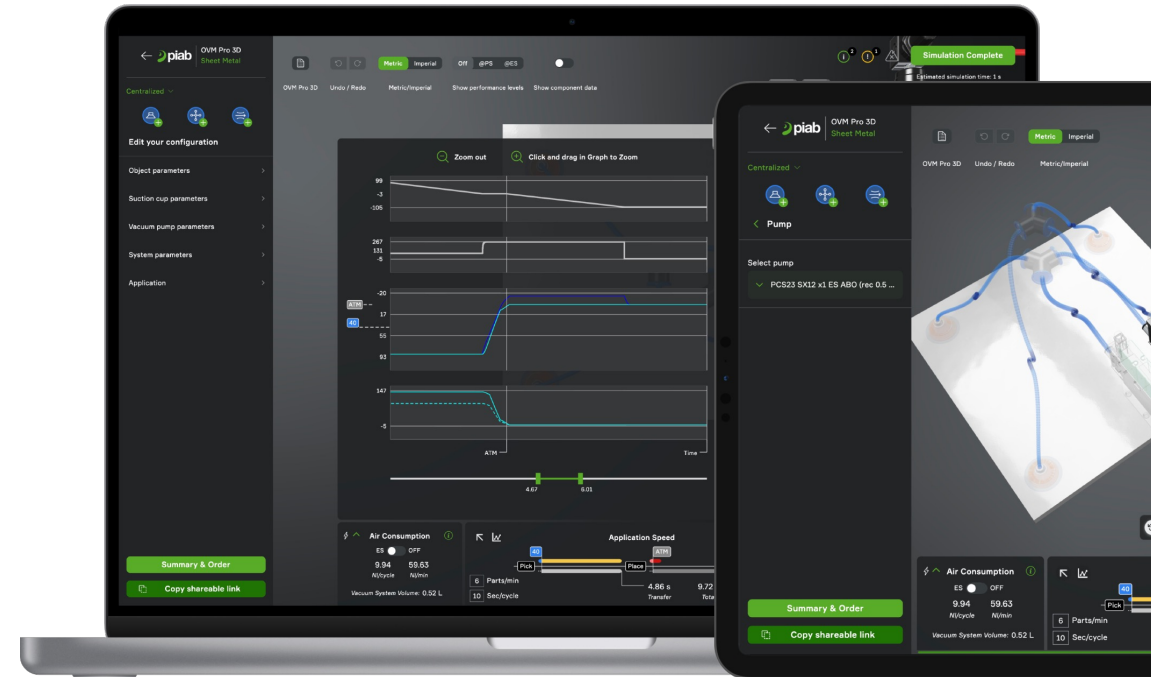
**We create world-leading
visualization tools.**

Helping people make smart decisions

ANIMECH was founded back in 1999, in the city of Uppsala, Sweden. With a mix of 3D artists, 3D engineers, developers and UI/UX experts, we have a team of 35 people and all the competence in-house.

We know what modern 3D technology can do, and we love using it to solve our client's most difficult problems. With a history of delivering solutions to international life science companies as well as engineering industry giants, we have gathered a wide understanding for different businesses and customers.

We push the limit for what is possible in the digital landscape and push ourselves as well as our clients to see new outcomes, solutions and results in their specialized field to create intelligent visualization tools for the future.



STRING
FURNITURE

POOLSTORE

HEMTEX

cytiva

EWELLIX

ICANIWILL
ICIW

Willab
Garden



NVIDIA

elfa



NORDISKA
INGLASNINGAR

permobil

SONY



McLaren

Roche

FJÄLL
RÄVEN

BAE SYSTEMS

WIFI

piab



ASSA



INR

OSCAR
JACOBSON

zoundustries

Marshall

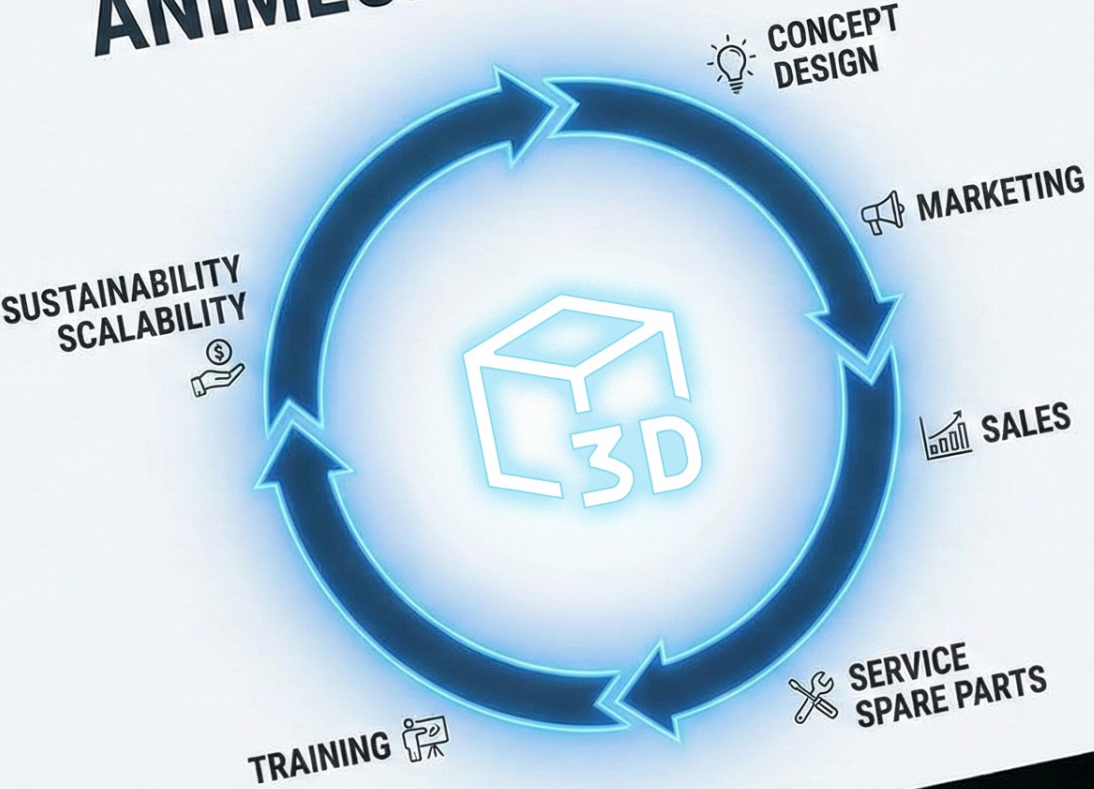
Kid
INTERIÖR



Hjältevadshus

GRYTHYTAN
STÄLMÖBLER

ANIMECH LIFECYCLE





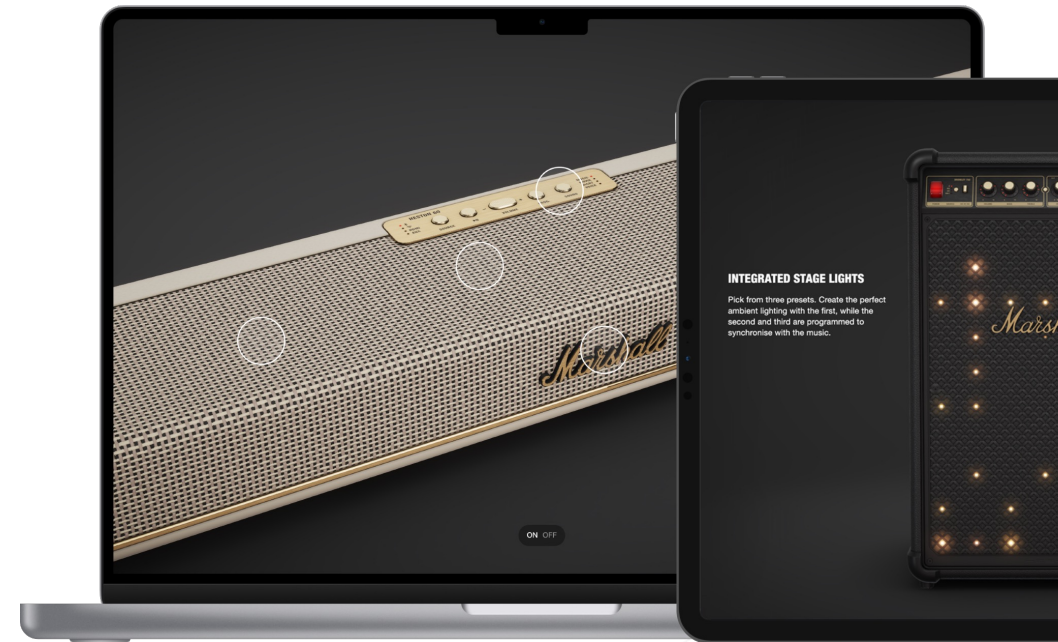
Global Clients, Diverse Industries: Our clients span worldwide, covering architecture, lifestyle products, interior design, industrial machinery, and life science instrumentation.

Complex Products, Smart Visualization: Clients share complex offerings; we provide smart visualization for better comprehension.

Engineering + Design: Animech merges engineering and design for top-tier global visualization tools.

Varied Solutions: From CPQ to interactive manuals, we enhance sales, speed up deliveries, and elevate satisfaction.

Empowered Decision-Making: Our tools foster intelligent visualization, empowering smart decisions for efficiency.





ANI CONFIG®

Swedish Pioneers in 3D & Interactive Visualization

Add interactive 3D with Configuration to your sales process

- Used by Cytiva, Elfa, Oscar Jacobsson, Willab garden, Fjällräven, INR, Assa Abloy, etc.
- Well integrated within our clients IT architecture.

Fast and user friendly

- Online and Offline support.
- Runs in any browser, even on mobile devices.
- Optimized hosting available.

Transfer specialist knowledge to users by using rule-based visuals

- Can parametrically modify 3D based on configuration.
- Support planning.

Automatic AR SaaS solution for all visual configurations

- The configurator can handle AR model generation on demand.
- No applications needed, runs native on mobile devices.



1

Boosted Sales

With Aniconfigurator each customer can explore all of the options to design a product according to their specific needs and desires. Once the customer has seen what that extra option will do for the product it is hard to resist.

Aniconfigurator has proved to increase the average order value.

2

Shorter Sales Cycle

When your customers have already seen exactly what they are going to get, the purchase decision is an easy one. In addition, as the engineering rules are built into the tool, there is no longer a need to get the experts involved in every purchase.

3

Cost Reduction

A visual tool helps increase understanding of the product and eliminates errors in ordering. Costs are reduced by avoiding manual configuration, errors and administration, especially on an international market where languages create barriers.



ANI SHOWROOM

Swedish Pioneers in 3D & Interactive Visualization

Cutting-Edge Presentation, Always

- All content, data, links etc. collected in one place, available at anytime, anywhere and always.
- Rotate, zoom and look around every single detail of the product.
- Add animations for extra effect.
- Add Hotspots with detailed information.
- Activate AR model for realistic experience, in your room.

Fast and User Friendly

- Everything runs in FrontEnd, without delays and slow experiences. Just load the application on any browser and enjoy!
- Available on all type of devices (mobile, tablet, desktop).

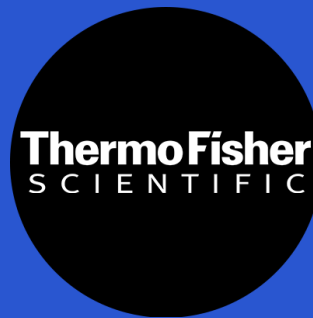
Environmentally Friendly?

- Showcase complex machinery and products globally without the need to ship heavy equipment, cutting logistical and transportation expenses.
- Reduce emissions and environmental impact by transitioning from physical demos to sustainable digital alternatives.

TAKE A CLOSER LOOK

Heston 120 delivers exceptional **depth and clarity**, using object-based audio to place every sound with pinpoint, three-dimensional accuracy **above and around you**.





ANI PART™

Swedish Pioneers in 3D & Interactive Visualization

Interactive Instructions for assembly, training and service both inside and outside the organization.

Keep Track of Spare-Parts: Don't know the name or the article nr, don't worry, just click on your part and order it.

A **Single Source of Information**, enable offline access and keeps it updated.

Independent. We love to help you create content in Anipart® but you can do it completely on your own, without dependencies to us





ANI PLANNER™

Swedish Pioneers in 3D & Interactive Visualization

Shorten Sales Cycle

- Visualize your floor planning in front of the customer and get fast feedback.
- Present various configurations in the same session.
- Well integrated within your IT architecture.

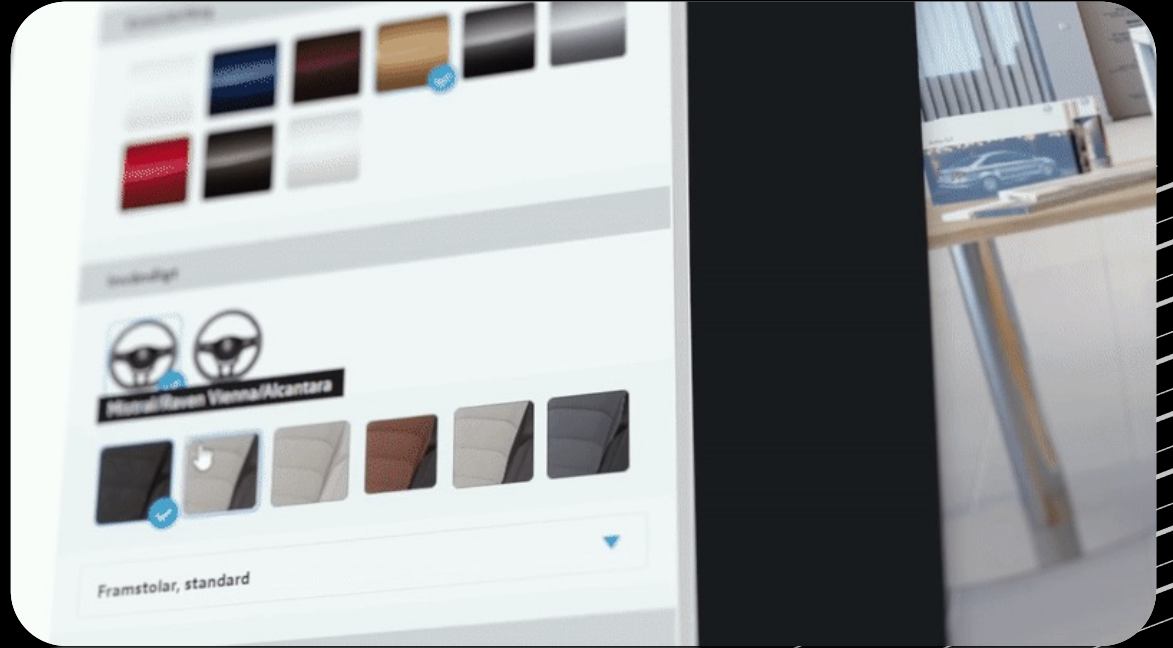
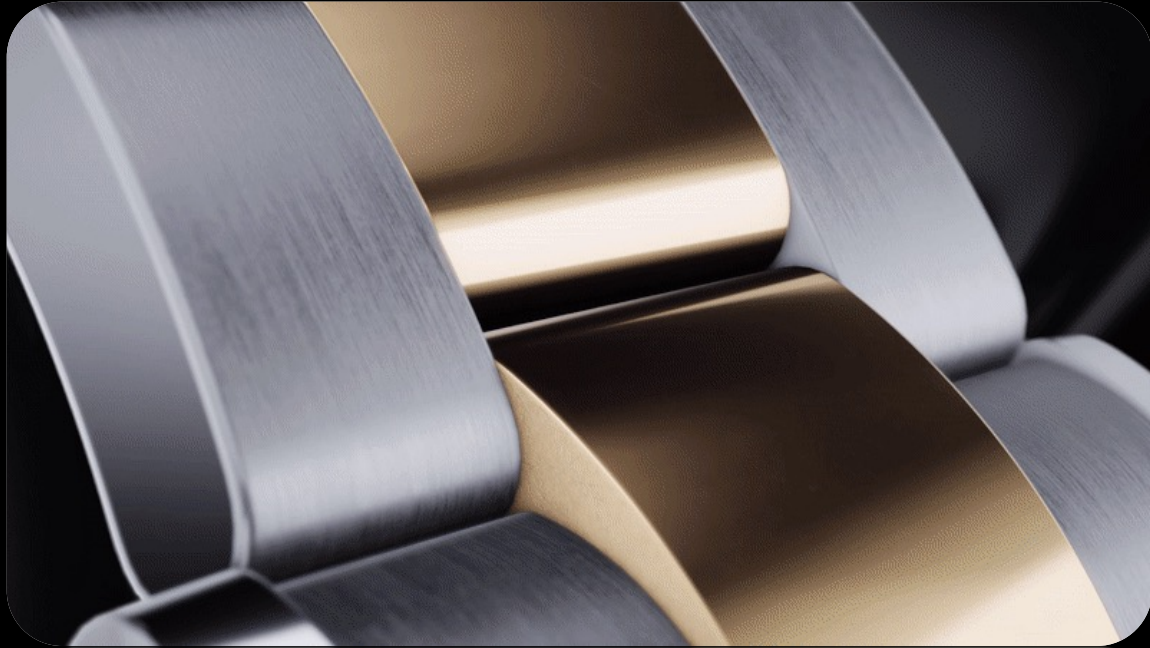
Improve Knowledge Transfer

- Do you have a few experts that needs to review everything before showing the customer? Get their knowledge built into the tool.

Easy to Adapt

- Feel that standard software is hard to customize to your needs? We have a standard platform that we adapt to your needs and can grow with your needs.







Staffan Hagberg

Chief Marketing Officer

+46 708 14 14 58

staffan.hagberg@animech.com



Tino Karazeimbekis

Sales & Marketing Executive

+46 76 111 33 85

tino.karazeimbekis@animech.com

