



NORDIC
SHELTER

Nordic Shelter
2023

Nordic Shelter is a global provider of mobile integrated systems based on specialized containers and shelters for military and industrial applications - based on our own design and construction.

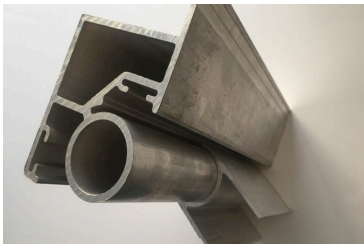
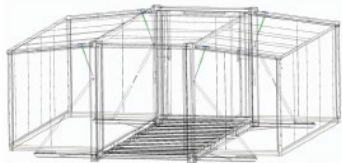
- Founded 2007
- HQ in Oslo, Norway
- Sales/project office in Gothenburg, Sweden
- Factory in Tallinn, Estonia
- Part of BNS Group since 2015



Competences and services

Services

- Project Management
- Systems Engineering
- Professional design and construction
- Supply chain management
- Customer Logistics



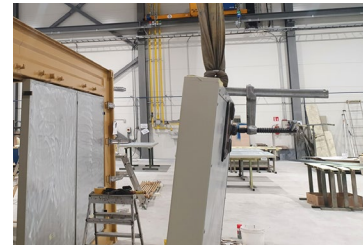
Production

- Preparation
- Welding
- Assembly
- Integration
- Electrical installation



Sandwich panels

- In house manufacturing of insulated panels
- Thicknesses 40, 50, 60, 80, 100mm



Painting

- Paint shop Size 16m * 10m
- 20 foot container capacity



Nordic Shelter Production – Tallinn, Estonia

- Established 2011
- Located in new and modern facilities in Tallinn, Estonia since 2020.
- Production area 2400 m²
- Quality and Environmental System is certified to:
ISO 9001:2015.
ISO 14001:2015.
- Welding certificates:
EN 1090 -1, 2
EVS-EN ISO 3834:2006
- CSC - Product Certificates for Intercontinental Transport
- HACCP - Container Food Safety Self-Control Plan competences
- ATP - Refrigerated transport certificates compliance.



Some of our customers



KONGSBERG



Myndigheten för
samhällsskydd
och beredskap



SAAB



QinetiQ



ADASI
أداسي

FFI Forsvarets
forskningsinstitut



LOSBERGER DE BOER



Statens vegvesen



قيادة حرس الرئاسة
Presidential Guard Command



FIRST Scandinavia



SCHENKER

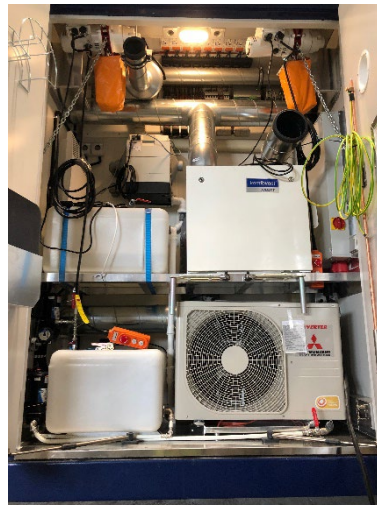
Important types of containers

- **Shipping containers (Sea freight containers)**
Corrugated steel panels, 10, 20 and 40 foot
- **Custom built containers**
Steel frame and insulated sandwich panels
10, 20 and 40 foot
- **Expandable 3in1 (and 2in1) shelters**
Steel frame, aluminium hinges, insulated sandwich panels
10 and 20 foot
- **Functional containers**
Steel bottom frame, aluminium frames, insulated sandwich panels, 20 foot
- **Open containers / flatracks**
Steel flatracks for hooklift and a variety of toolboxes, lashing rings, lashing points.
Room for 1 x 20ft container or 2 x 10ft.



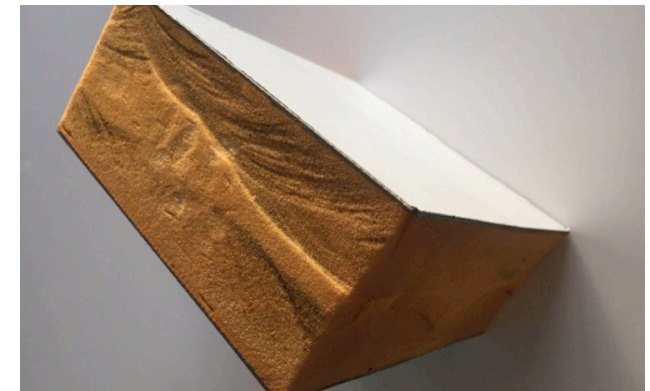
Integrated solutions

- Separate technical compartment with electrical inlet/ panel, generator, AC unit, ventilation, dehumidifier ++
- Power management systems
- Racks, routers
- Plumbing integration
- A wide array of interior integration (desks, chairs, whiteboards, projector, coffee machine)
- Extractable cranes



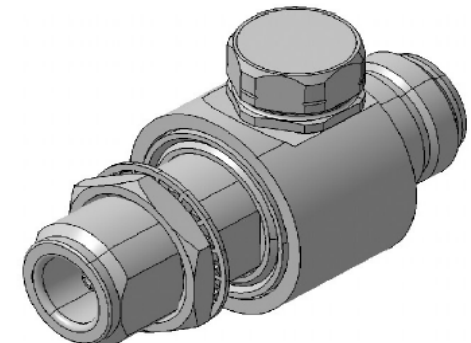
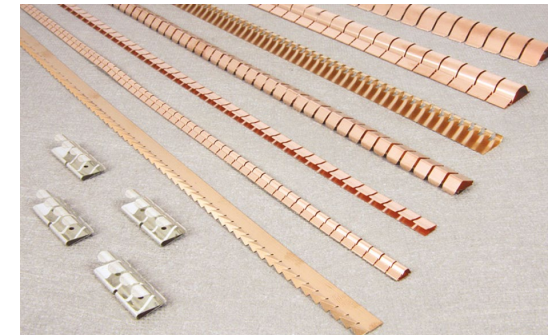
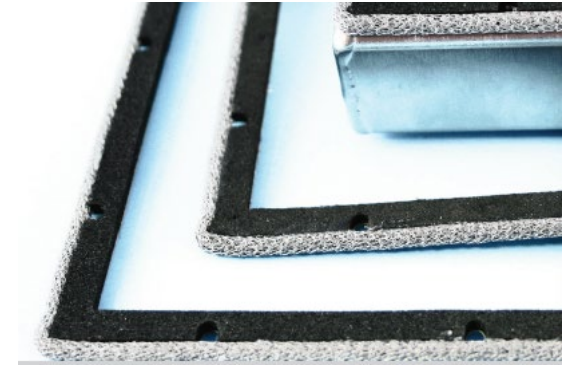
Technology and design features

- Aluminum profiles
 - High quality extruded profiles
- High quality rubber gaskets
 - Long lifetime, ensure no water intrusion
- Insulation
 - To handle warm/cold environment
 - Foam R-value 18 , U-value 0,6 W/m2K
 - 50mm foam in standard insulated panel walls, 60mm in roof, 80mm in floor
 - 1mm stainless steel plate on both side of panels
- Separate technical room for HVAC, generator, de-humidifier, power distribution, ICT
- Interior LED lights and power/ICT ducts



Additional features

- EMC/EMI solutions
- EMP protection
- Tempest solutions
- Sound Attenuation
- Fire Protected panels
 - EPS foam
 - Phenolic Resin Sheets added to outer walls.
- Mould resistant paint
- Optional armour
 - Steel plates outside
 - Composite materials integrated



Expandable Shelters

- 10/20 foot ISO compliant
- Robust and flexible design
- 1CC std model, 1C possible
- Levelled/flat floor
- Tailor made for customer requirements
- Erected by 2 man in 20 min
- Hooklift frame possible



	10' 1CC	20' 1CC
Empty weight	~3,7 ton	~4,7 ton
Floor space	~17 m2	~35 m2
Interior height	210 cm	210 cm

Flatracks

- Standard or folding Hook bar
- Intermodal (air, road, rail, sea)
- Foldable A-frame design enhances transport and storage efficiency
- Positioning of lashing rings can be tailored to customer needs.
- Twist-locks to transport 2 x 10foot or 1 x 20 foot container.

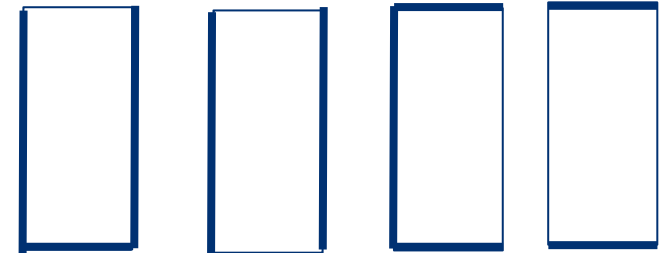


Modular container system

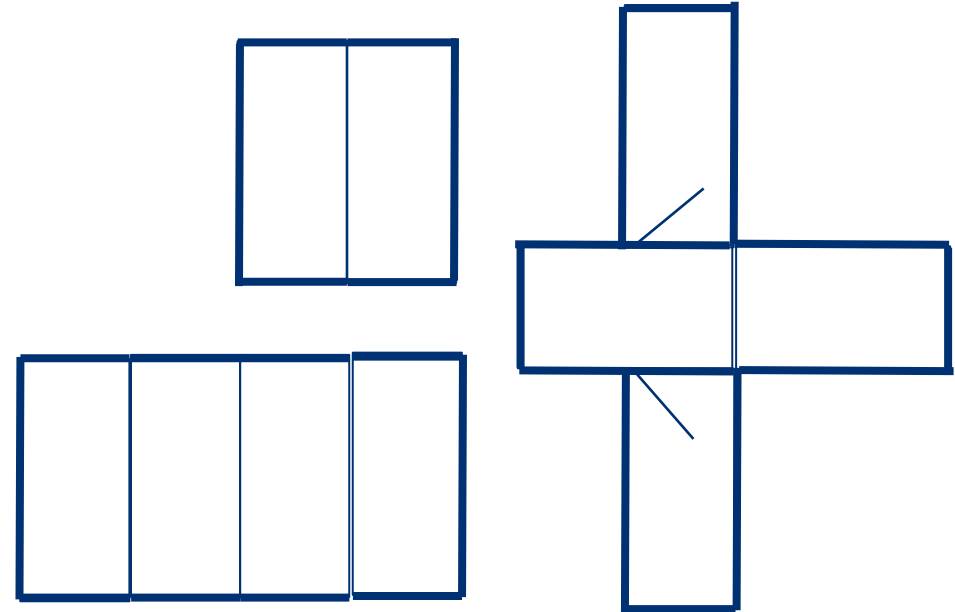


- 20 foot insulated building blocks to form a larger modular “building”
- CSC approved modules
- Flexible window and door placement
- Flexible cut-outs for ventilation and ACU
- Cover plates used for transport

Building block layouts



Example configurations



Hydraulic Expanding Shelters

- 20 foot ISO compliant
- Unique design with extractable technical compartment
- Flat floor
- Erected by one man in 20 min



Function shelters for rescue services and law enforcement

- 20foot A-frame hooklift
- Lightweight aluminum frame w/external lights
- Technical compartment with power generator, HVAC, water/chemical tanks etc provides autonomous operation capability
- Ramp with roof and waterproof curtain provides workspace and ability to dismount small vehicles/ROV
- Complete mission packages offered:
 - Command & Control
 - Diving equipment
 - Traffic incident
 - Bomb squad
 - Chemical response
 - Fire squad



Specialized shelters - Examples

1. HAZMAT container
2. Sanitary shelters
3. Mobile Production Kitchen
4. Command Post, office
5. Accommodation
6. Mobile Drone Support Facility
7. Medical Facility
8. Ammunition storage and transport
9. Tire repair workshop
10. Temperature controlled container
11. Heavy Vehicle Workshop Containers



1) HAZMAT container

- Based on a 20foot ISO container
- Provides a safe and environment friendly solution for collecting, treating, storing, transporting hazardous material.
- Spill safe floor with collection mechanism
- Complete technical compartment for autonomous operations.



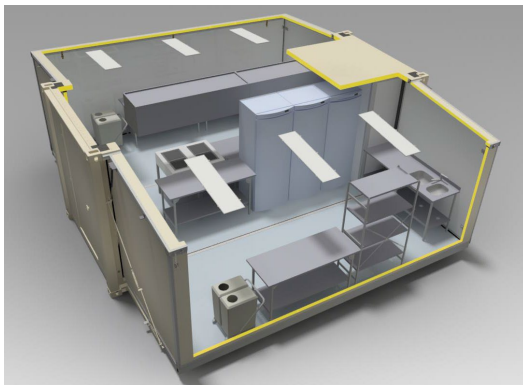
2) Sanitary shelters

- Showers, Latrines, Sauna, Laundry
- Stainless steel or porcelain equipment
- Combination of shower and WC possible
- Integrated heating and ventilation
- Optional 8000 litre freshwater tank on top and sewage tank on bottom



3) Mobile Production Kitchen

- ISO 20 ft 1C or 1CC in transport mode.
- Serving up to 750 meals/day
- Complete and fully equipped production kitchen, "Turn-Key", operational in 1 hour from arrival on site.
- All supporting infrastructure like heating, ventilation, cooling, power are integrated.



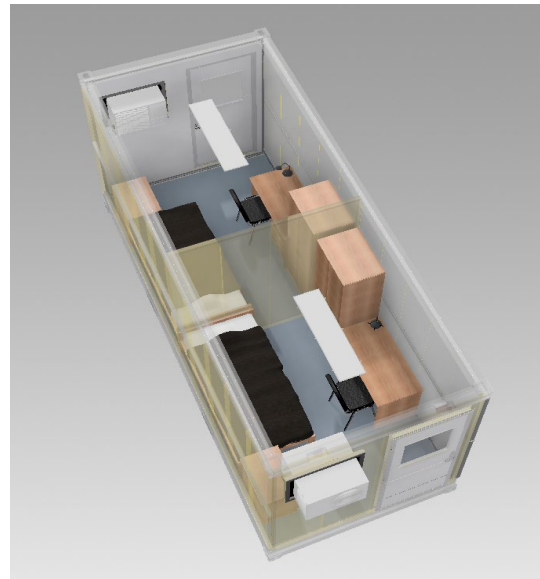
4) Command Post, Office, Control

- Command Center
- Planning Cell
- Briefing facility
- Control room
- Mobile Office



5) Accommodation containers

- 20foot standard or 3in1 expandable (12/36m²)
- Flexible configuration for
 - Resting areas
 - Sleeping quarters



6) Mobile Drone Support Facility

- Self sustained integrated 20 foot 3in1 expandable solution for
 - Storage/transport
 - Maintenance
 - Operation

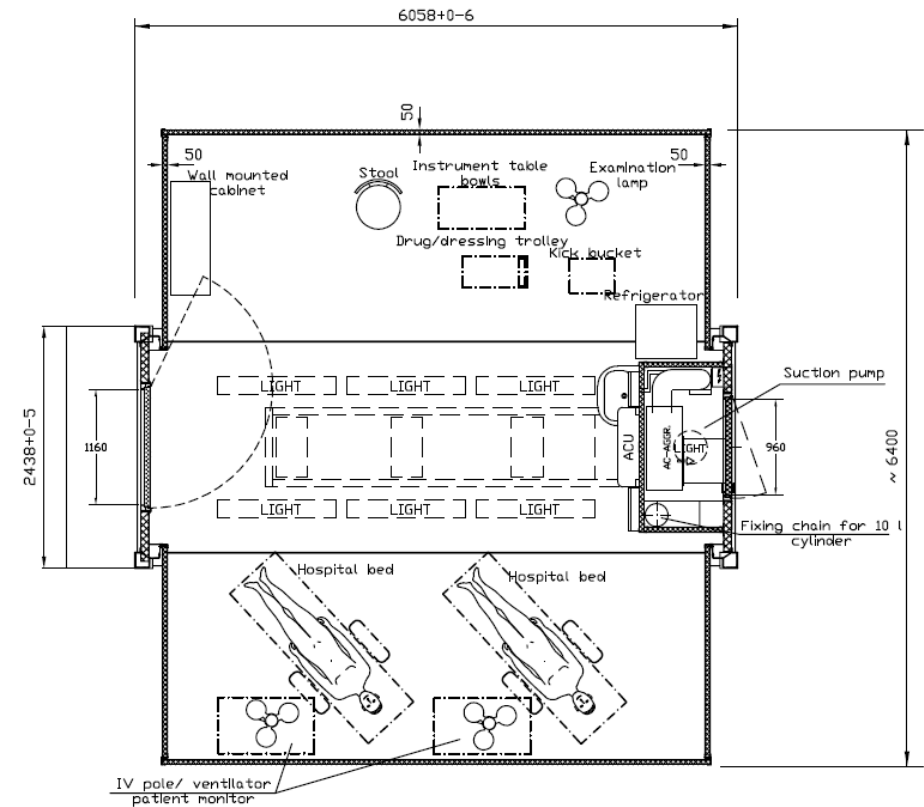
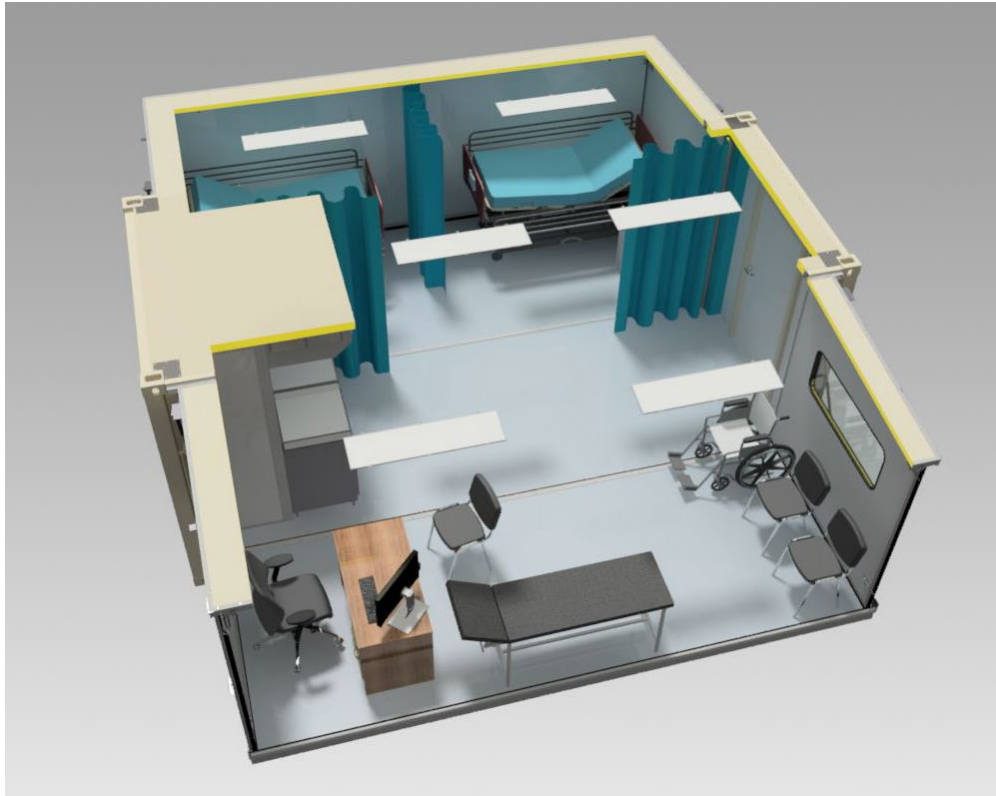


7) Medical Facilities

- Self sustained 3in1 expandable solution with integrated infrastructure.
- Heating, ventilation, cooling, dehumidifier, water and clean air aggregate, medical gas and oxygen system, suction unit etc
- Suitable for;
 - Surgical Operating Suite (up to 2 Operating Tables)
 - Intensive Care Unit (ICU) (4 beds)
 - Small Clinic
 - Diagnostic
 - Ward (4-8 beds)



7) Example layout Medical Unit



7) 20 foot 1C ISO Multifunctional Medical Shelter

- One shelter, many different configurations
- Integrated DROPS/PLS hooklift frame to NATO STANAG 2413
- Air transportable

Hook lift handling



Hook lift bale bar to NATO STANAG 2413



Doctors Office/Clinic



Ward



Pharmacy



Laboratory



7) Mobile Field Hospital

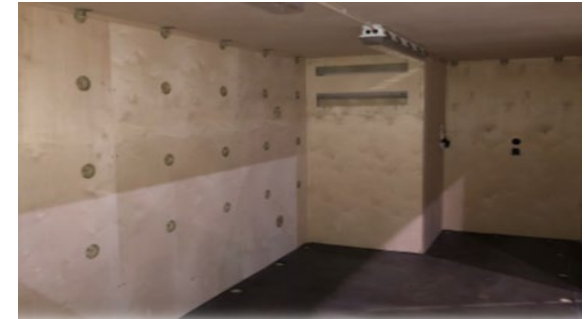
The “base” MFH includes the following functions:

- Operating Theatre with 1 Operating table (1)
- Reception and Administration Unit (1)
- Emergency/Staff Duty Room (1)
- Diagnostic Unit with X-ray and Ultrasound machine (1)
- 4 bed Intensive Care Unit (1)
- Pharmacy (1)
- Laboratory (1)
- Sterilisation Unit (1)
- Laundry (1)
- Ablution Units (2)
- 15 bed Ward with Nursing Station (tents, frame or inflatable air beam)
- Generator Unit
- Power distribution system
- Water and sewage distribution system



8) Ammunition storage and transport

- 20foot ISO with side or end doors
- Climate controlled (temperature and humidity)
- Plywood lining inside prevents sparks
- Separate technical compartment with ACU electrical board, ACU and dehumidifier
- EX proof electrical equipment in storage compartment
- Optional
 - Integrated rollers
 - Alarm



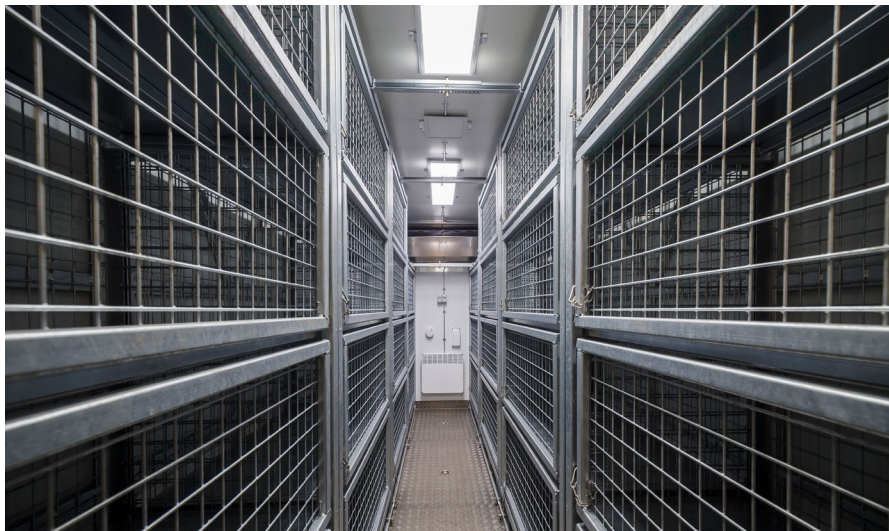
9) Tire repair workshop

- 20foot 3in1 expandable
- For repairing “run-flat” and other tires on military vehicles
- Integrated tire repair equipment x 2, tools, extractable crane.



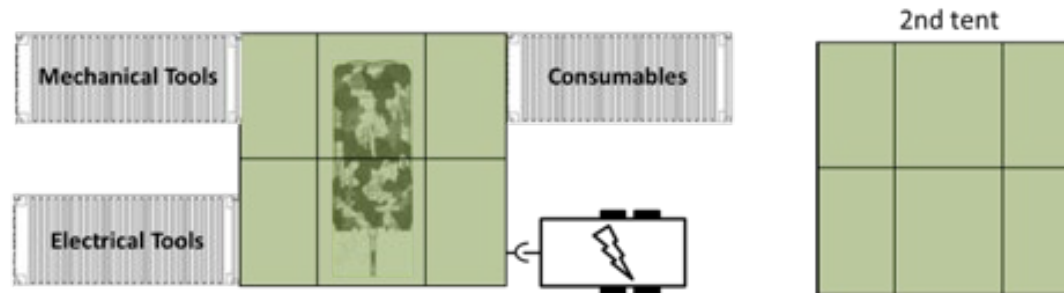
10) Temperature controlled container

- 20foot Isolated ISO container - MIL-Spec
- Operational in extreme cold and warm temperatures
- Integrated Thermo King unit for stable indoor temperature
- Integrated diesel tank, 230V and 400V inlets
- Add on; Racks to carry 5 400 liters of water in cans (Water can container), C-rails, lashing points



11) Heavy Vehicle Workshop Containers

- 3 or 4 individual containers supporting the main tented working / technical area.
- Internal cranes extend into tented area.
- Supported by a power source (within or externally to a container).
- Mechanical & Electrical, Consumables and Storage





www.nordicshelter.com

sales@nordicshelter.no